

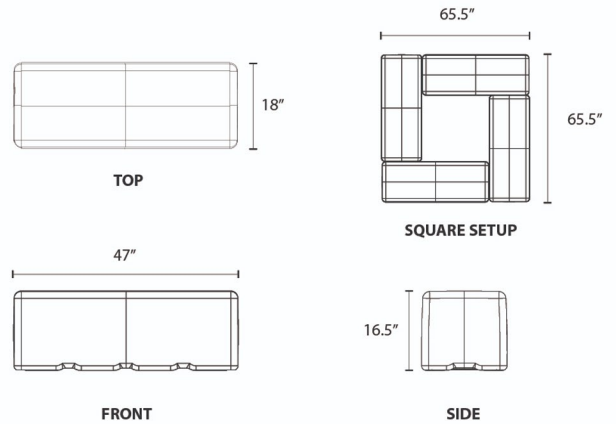
Dash

Session - Recovered Coastal Plastic



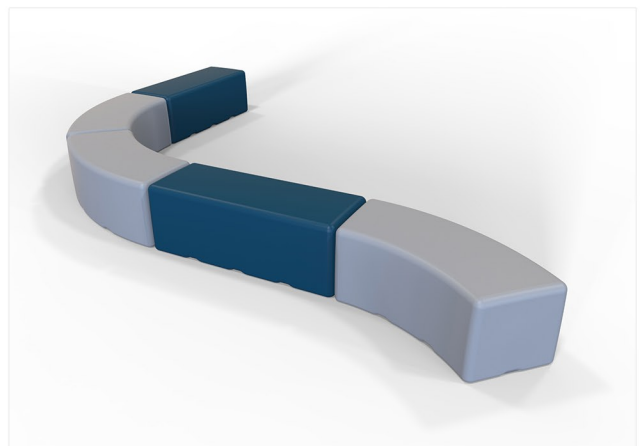
Item # 11601BX__: Dash Bench (straight design):
47" Length - 18" Width - 16.5" Seat Height, 39 lbs

Tenjam has made a giant leap forward in recycled materials and proven that Recovered Coastal Plastic (RCP) can be economically recovered, recycled, and turned into high performance products. RCP is plastic debris recovered from shorelines, waterways, and coastal communities where it's intercepted before entering the ocean. All Tenjam Session Series products include a varying percentage of RCP material in their construction. This is a hard plastic product suitable for indoor and outdoor environments. 100% recyclable. Certified for healthy indoor air quality.



Session Series Standard Colors

- | | | | |
|---|---|---|---|
|  |  |  |  |
| Yellow
Color Code: YE | Orange
Color Code: OR | Red
Color Code: RD | Violet
Color Code: VI |
|  |  |  |  |
| Pure Green
Color Code: PG | Lime Green
Color Code: LM | Anthracite Gray
Color Code: AG | Medium Gray
Color Code: MG |
|  |  |  |  |
| Light Blue
Color Code: LB | Surf Blue
Color Code: SB | Medium Blue
Color Code: MB | Dark Blue
Color Code: DB |
|  |  |  | |
| Cobblestone
Color Code: CS | Gray Granite
Color Code: GG | River Rock
Color Code: RR | |

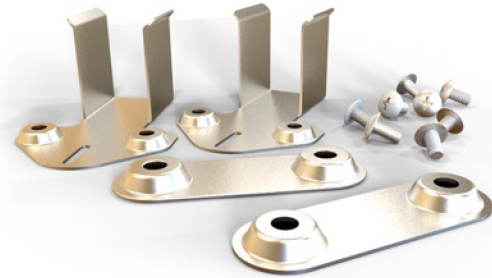


GANGING INSTRUCTIONS - SWERVE & DASH

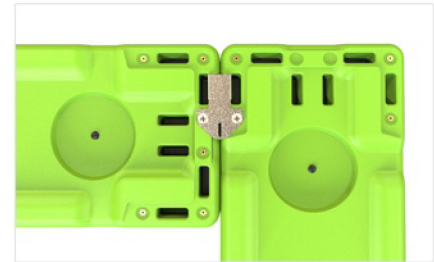
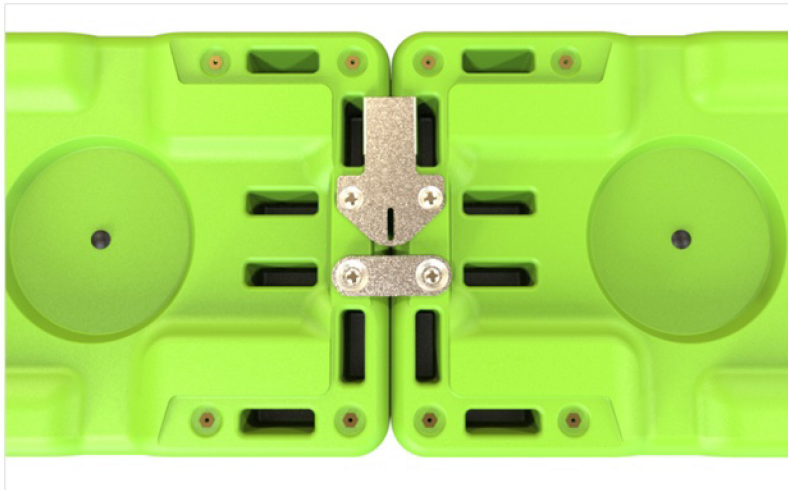
Ganging Bracket Kit for Dash & Swerve

Optional Item # 90501XXSS

Both Swerve and Dash have the ability to be connected to one another in several different configurations, or to be anchored to the floor. This is done with optional ganging brackets made of stainless steel. Kit #90501XXSS includes 2 Deluxe Brackets, 2 Straight Brackets, and 8 mounting screws.



Inline Connections - Hidden Hardware

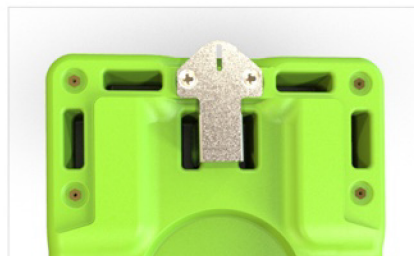
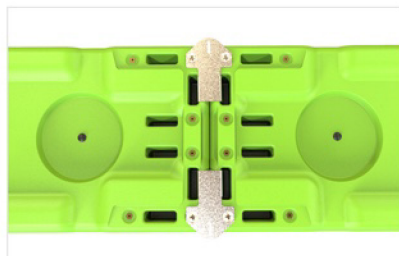


90 Degree Turn

A single Deluxe Bracket can be used to connect two Dash units at a 90 degree angle, as shown.

The pieces can be connected as shown. Connect inline combinations of Dash & Swerve modular benches together using one Deluxe Bracket and one Simple Bracket.

Securing to the Ground



The Deluxe Brackets can be turned so the head faces outward and reveals the anchoring slot in the bracket. Add your own anchoring fasteners for your type of flooring.