



DASH SWERVE

SPLASH & SESSION Series

Swerve Bench (arc) and Dash Bench (straight) are modular and can be used independently or together to make unlimited arrangements to best fit your indoor and outdoor spaces. Rotationally molded hard polyethylene material for supreme impact strength.

Waterproof and weather resistant.
Engineered for year-round outdoor use and also great for high-traffic indoor spaces.
Bring on the sun, sand, snow, salt, and rain...these Benches can take it.

- Easy to clean and sanitize.
- Ultra-low VOC emissions to promote healthy indoor air quality.
- Fire test compliant with CAL117-2013 and has zero added flame retardant chemicals.
- Supports up to 750 lbs.
- Rounded edges and corners for safety.
- Slightly crowned top surface sheds liquids and dries fast.
- 100% recyclable.

DASH SPLASH



SWERVE SPLASH



SWERVE SPLASH



DASH SPLASH



SPLASH PRODUCT INFO

This version has a 16.5" seat height and is designed to be placed in the shallow water of a swimming pool. The maximum water depth should not exceed 10". Set the bench in the pool and it rests in place. Pull it from the pool and it quickly releases the water from the core of the product so it can be used on the pool deck. This version does have a carrying handle opening on each end of the bench, two cupholders, and openings on the bottom to allow water to enter and exit the product core. This version does not include rubber legs. This version cannot be filled with gravel and does not have threaded metal inserts for use with ganging brackets. Each bench is approximately 33 lbs.

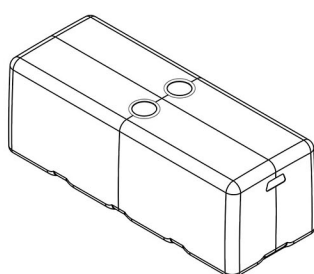
#SPL11601BX __BL - Splash Dash Bench, Color TBD, Black Cupholders

#SPL11601BX __WH - Splash Dash Bench, Color TBD, White Cupholders

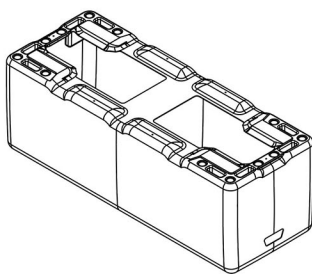
#SPL11701BX __BL - Splash Swerve Bench, Color TBD, Black Cupholders

#SPL11701BX __WH - Splash Swerve Bench, Color TBD, White Cupholders

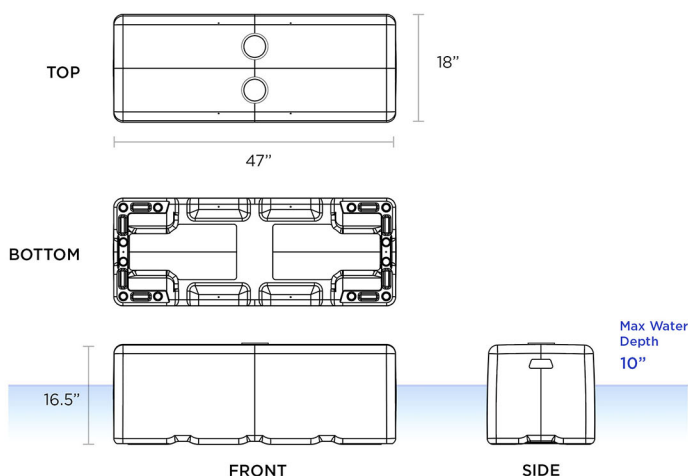
DASH SPLASH



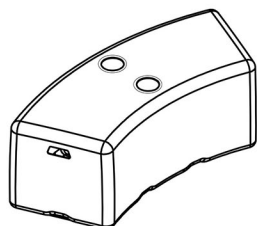
TOP



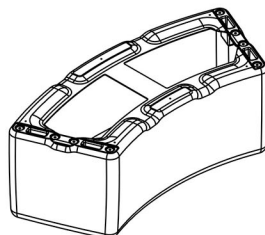
BOTTOM



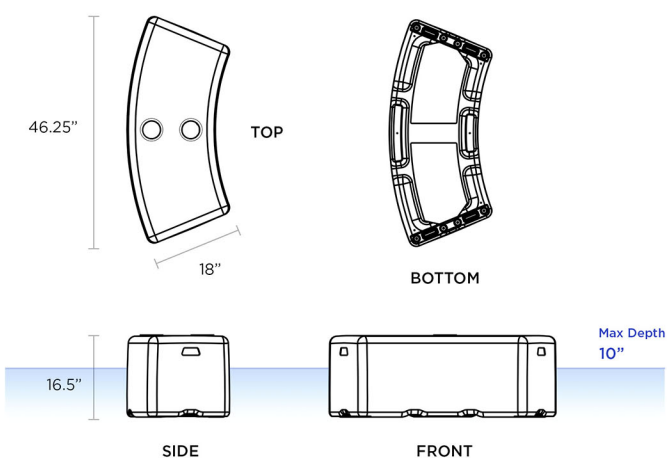
SWERVE SPLASH



TOP

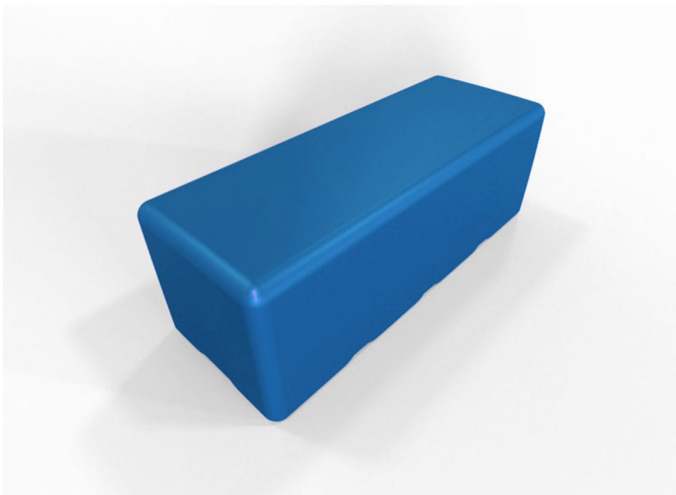


BOTTOM





DASH SESSION



DASH SESSION

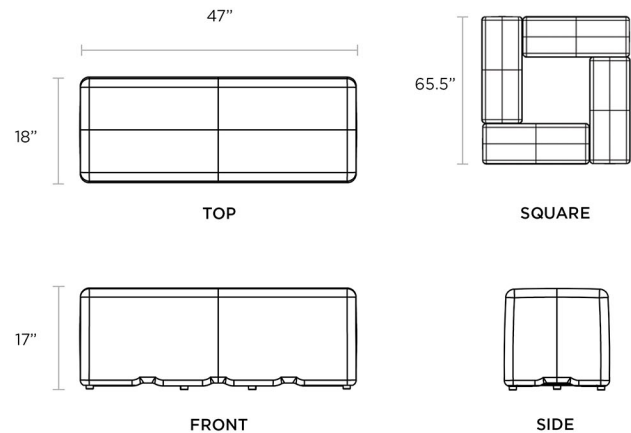
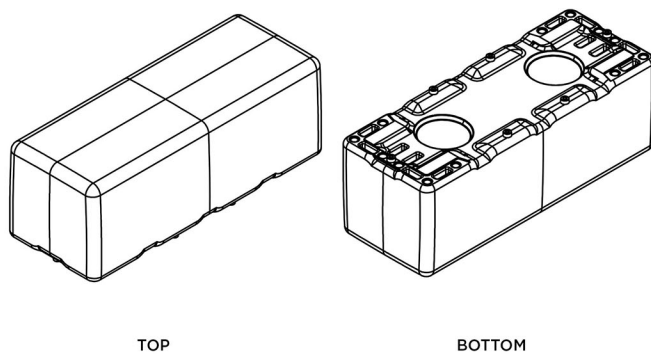
SESSION PRODUCT INFO

This version has a 17" seat height and includes Santoprene® rubber legs for floor grip and protection. This version does not have handles, cupholders, or openings on the bottom and is not modified for use in a swimming pool. This version does allow for the optional items that include item #WEIGHTCAP (needed for adding weight if desired) and Item #90501XXSS (ganging brackets). Each bench is approximately 35 lbs.

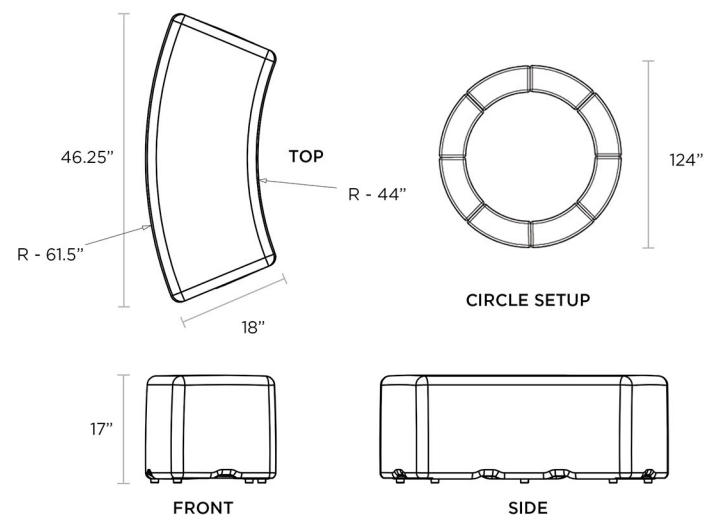
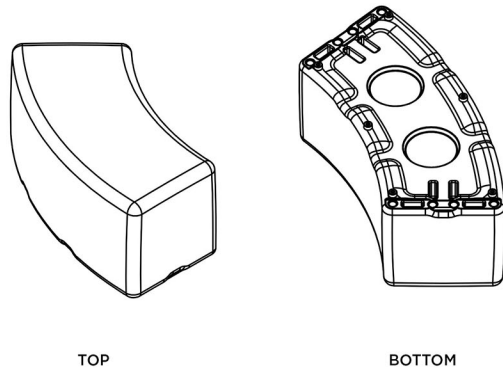
#11601BX __ - Session Dash Bench, Color TBD
47" Length x 18" Width x 17" Height, ~35 lbs

#11701BX __ - Session Swerve Bench, Color TBD
46.25" Length x 17" Height, ~35 lbs

DASH SESSION



SWERVE SESSION



Do you need seating that weighs more?

Are you furnishing a rooftop entertainment venue, condominium balcony, or public park? These are just some of the locations where your seating may need to have added weight for safety or theft prevention. Consider optional item #WEIGHTCAP for the Session Series version of Dash & Swerve Benches. When #WEIGHTCAP is added to the product, a 1.75" diameter screw plug is added to the bottom. This allows for pea-size gravel to be funneled into the core of the product for additional weight. This option is factory installed and must be added at the time of manufacturing. Installation supplies and gravel are not provided by Tenjam.

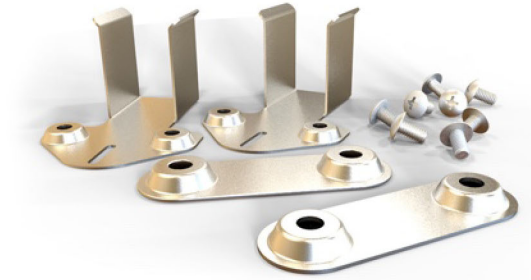
#WEIGHTCAP: Allows for adding up to 100 lbs of gravel to Dash or Swerve Benches. Approximately 135 lbs when filled.



Ganging Bracket Kit for Dash & Swerve

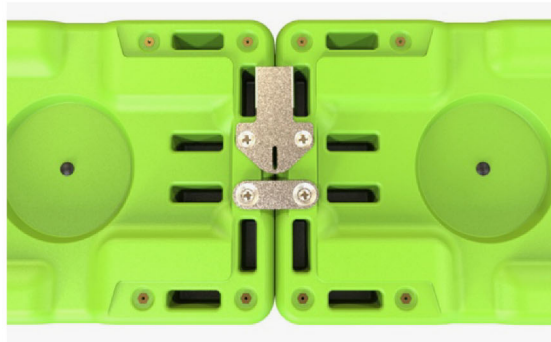
Both Swerve & Dash have the ability to be connected to one another in several different configurations, or to be anchored to the floor. This is done with optional ganging brackets made of stainless steel.

#90501XXSS: Ganging Bracket Kit for Dash & Swerve - Includes 2 Deluxe Brackets, 2 Straight Brackets, and 8 mounting screws.



INLINE CONNECTIONS

Connect inline combinations of Dash & Swerve modular benches together using one Deluxe Bracket and one Straight Bracket.



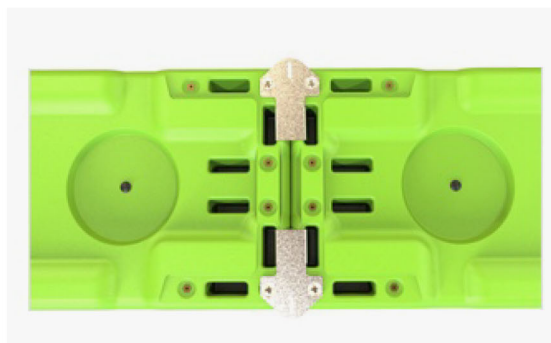
90 Degree Turn

A single Deluxe Bracket can be used to connect two Dash units at a 90 degree angle, as shown.



SECURING TO THE GROUND

The Deluxe Brackets can be turned so the head faces outward and reveals the anchoring slot in the bracket. Add your own anchoring fasteners for your type of flooring. Remove rubber legs from benches so the exposed bracket is flush with the ground.



2 digit color codes to be used in the blank spaces in the product codes.



Lime Green
LM



Yellow
YE



Orange
OR



Red
RD



Violet
VI



Sea Foam Green
SF



Surf Blue
SB



Light Blue
LB



Medium Blue
MB



Dark Blue
DB



Desert Tan
DT



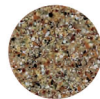
Medium Gray
MG



Anthracite Gray
AG



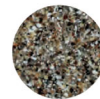
White
WH



Cobblestone
CS



Gray Granite
GG



River Rock
RR